



# The Pathways Team

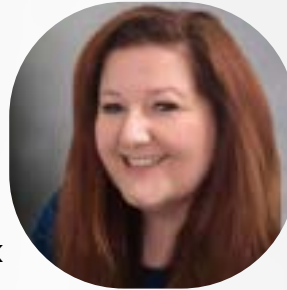


**Rebecca**

College Principal

07300858662

rebecca.bromley-woods@pinccollege.co.uk



**Donna**

Pathways Lead  
Whole College

07498590403

donna.taylor@pinccollege.co.uk



**Jodie**

Vice Principal  
Pathways and  
Employability

07376 973244

jodie.booth@pinccollege.co.uk



**Julie**

Pathways Lead  
Midlands

07398796061

julie.chapman@pinccollege.co.uk



**Claire**

Pathways Lead  
Yorkshire

07539020126

claire.hawker@pinccollege.co.uk



**Helen**

Work Experience  
Co ordinator  
Yorkshire

07376972920

helen.evans@pinccollege.co.uk



## **What is a Supported Internship with Pinc College?**

**A pathway to an inclusive career within galleries, museums, and the Cultural and Creative Sectors.**

- A work and career based course for young people (18-25) who have an EHCP
- Work-based learning and support to gain skills for employment and adulthood
- For young people who want to work, but may need some additional support to prepare them for this
- Creative and Cultural work placements with support
- SEND and mental health consideration and support



## **Why choose a Supported Internship?**

I would like to work in a setting that will help me to move into potential sustainable employment or volunteering positions.

I would like to work in an adult working environment.

I would like to have access to careers support from Pathways Leads and Mentors

I would like to progress from art and design based courses.

I would like to have access to a one to one Mentor.

I would like to continue SEND, communication and mental wellbeing support.

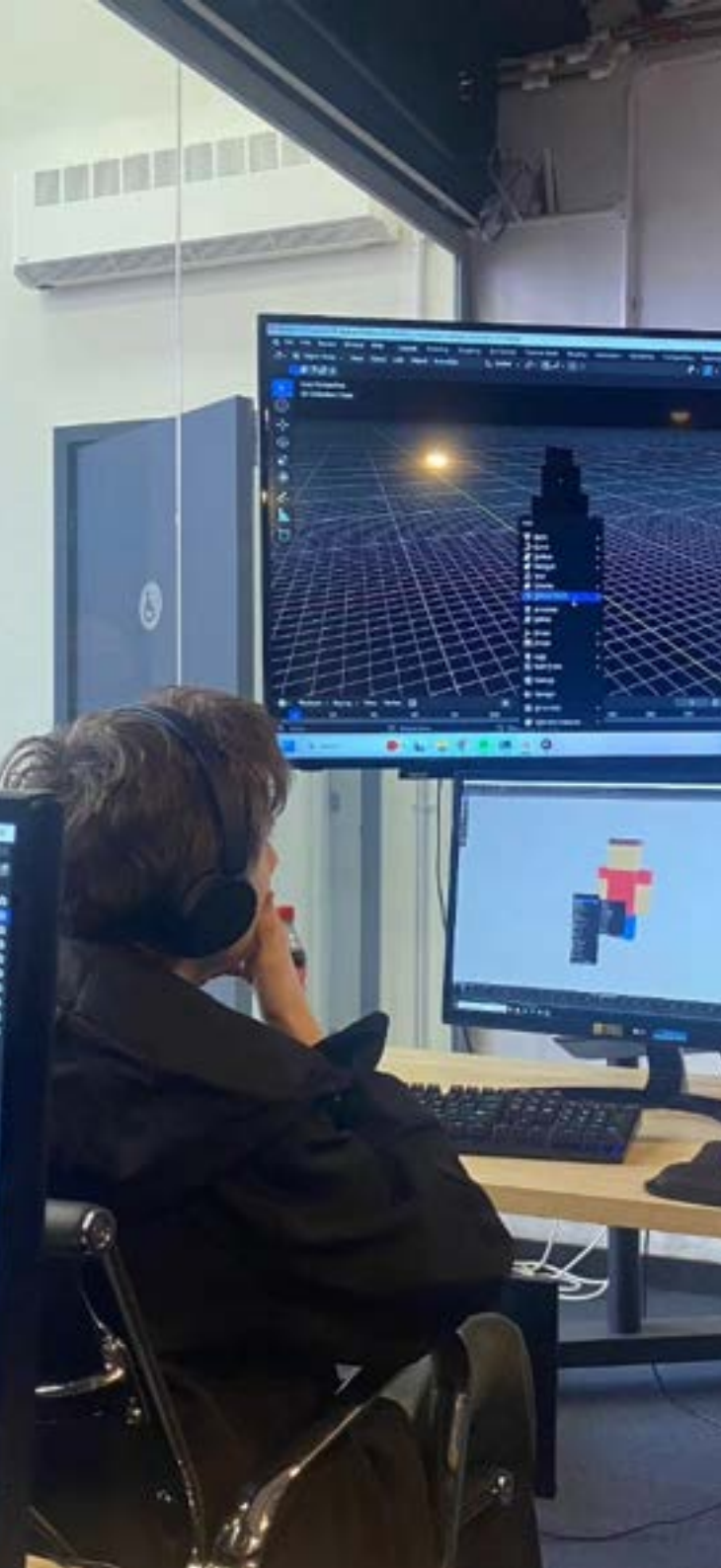


# **Pinc College Pathways**

## **Supported Internship:**

### **Our offer**

- A unique pathway into the Cultural and Creative sectors
- Opportunity to develop skills for creative entrepreneurship and self-employment
- Placements and learning within a wide range of Cultural and Creative settings
- Personalised curriculum including training for the creative sector, Employability, Preparing for Adulthood, Personal development, English and Maths.
- Personalised support tailored to each Intern
- Supported Internship Socials with other Internship students
- High quality risk assessed placements
- Placements matched to skills and aspirations!



## How it works

- You will meet with our Pathways Team so we can understand your skills, interests and aspirations
- We will discuss different options with you to create a programme that is personalised and supports your needs
- You will be matched to your mentor and introduced ensuring you feel comfortable and they are familiar to you
- Your plan for the term will be discussed with you and reviewed regularly. This can change throughout the year in line with your interests
- We will work closely with the workplace to ensure your colleagues know all about you, your requirements and that the Supported Internship supports your aspirations
- You will attend your work placements with your mentor, or with them nearby/checking in to support you
- Our Pathways Team will support you through to a suitable destination when you complete your Pathways Supported Internship

## Benefits to Interns

- An opportunity to demonstrate and celebrate your skills
- An understanding of working in the Cultural and Creative sectors
- Personalised work based learning programme in a real employment setting
  - Developing skills and independence
  - Improving self-confidence and wellbeing
  - Preparing for future success in the workplace
- Seamless transition from Student to Intern within Pinc College
- Next step building on skills from work experience
- Intern Portfolio with Employer references and CV
- Careers support, from Pathways Leads and Mentors
- Secured destinations

## Quotes from Interns

I can't wait to explore my future prospects further through the pathways scheme

I was just an Intern with barely any experience under my belt, I didn't feel like I was out of place there or that I didn't belong and for that you have my gratitude

I feel like a new person...  
I'm happier, more  
ambitious...  
and I am more confident

my time here will be the centre-piece for an ever growing portfolio of work experience and that no matter what the future holds I have that extra fragment of knowledge forever thanks to all of you





## **Pathways Supported Internships are available in the following areas:**

**Manchester and Greater Manchester**

**Yorkshire**

**Midlands**

**Cardiff**

**Please contact us for more  
information.**

# Pathways Supported Internship

## Curriculum Overview

### Work placement

- This will usually be for 4 days a week alongside 1 day studio based learning
- You will be matched to a creative or cultural role that links with your skills, interests and aspirations
- Take part in induction, training and work placement reviews with your employer to help you progress and achieve.

### Careers and Employability

- Learn about and develop skills for employment in the cultural and creative sectors.
- Continue to develop your personal brand, presentation and networks
- Develop the knowledge and skills to prepare you for paid employment

### English and Maths

- You will work towards personalised, meaningful targets linked to your EHCP's and aspirations.
- If you are able to study towards GCSE or Functional skills at the next level, you will access classes and work towards achievement of a qualification.

### Personal and Social Development (PSD)

- You will continue to learn and develop some of the wider skills that will support your Personal and Social Development.
- Key themes include Self and belonging, Relationships, Wellbeing, Personal safety, Celebrating success, E-Safety, Consent and control and Community.



**Our Values**

**Respectful**

Mutual acceptance for everyone

**Responsible**

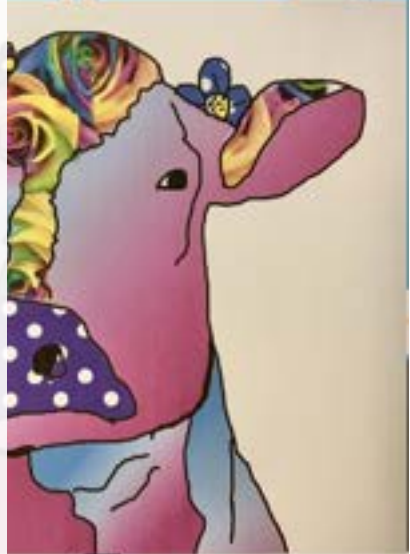
Consideration and ownership of your actions

**Safe**

Making sure nobody is at risk from mental, physical, or emotional harm

**Kind**

Treating people how you would like to be treated



**For more information about  
our Pathways Supported Internships  
Contact Jodie Booth  
[jodie.booth@pinccollege.co.uk](mailto:jodie.booth@pinccollege.co.uk)**

**For general enquiries:**  
[connect@pinccollege.co.uk](mailto:connect@pinccollege.co.uk)  
0161 667 0910  
[www.pinccollege.co.uk](http://www.pinccollege.co.uk)

Connect with us on social media;  
Twitter @pinccollege  
Instagram @pinccollege  
Facebook @pinccollege



**Pinc  
College.**

A Not for Profit  
Organisation.

We operate in the  
interest of the young  
people we serve,  
inclusively and with  
social purpose.

## **Our commissioning partners**

Birmingham Council, Bradford Council, Calderdale Council, Cheshire East Council, Cheshire West Council, Derbyshire Council, Kirklees Council, Lancashire Council, Leeds Council, Manchester Council, North Yorks Council, Oldham Council, Rochdale Council, Salford Council, Stockport Council, Stoke on Trent Council, Tameside Council, Trafford Council, Warwickshire Council, Wigan Council, Milton Keynes Council, York City Council

**Company number: 10535404**

**URN: 149344, DfE number: 352/7901 UKPRN: 10066798**

**Registered office address: Manchester Museum, The University of Manchester, Oxford Road, Manchester, M13 9PL**